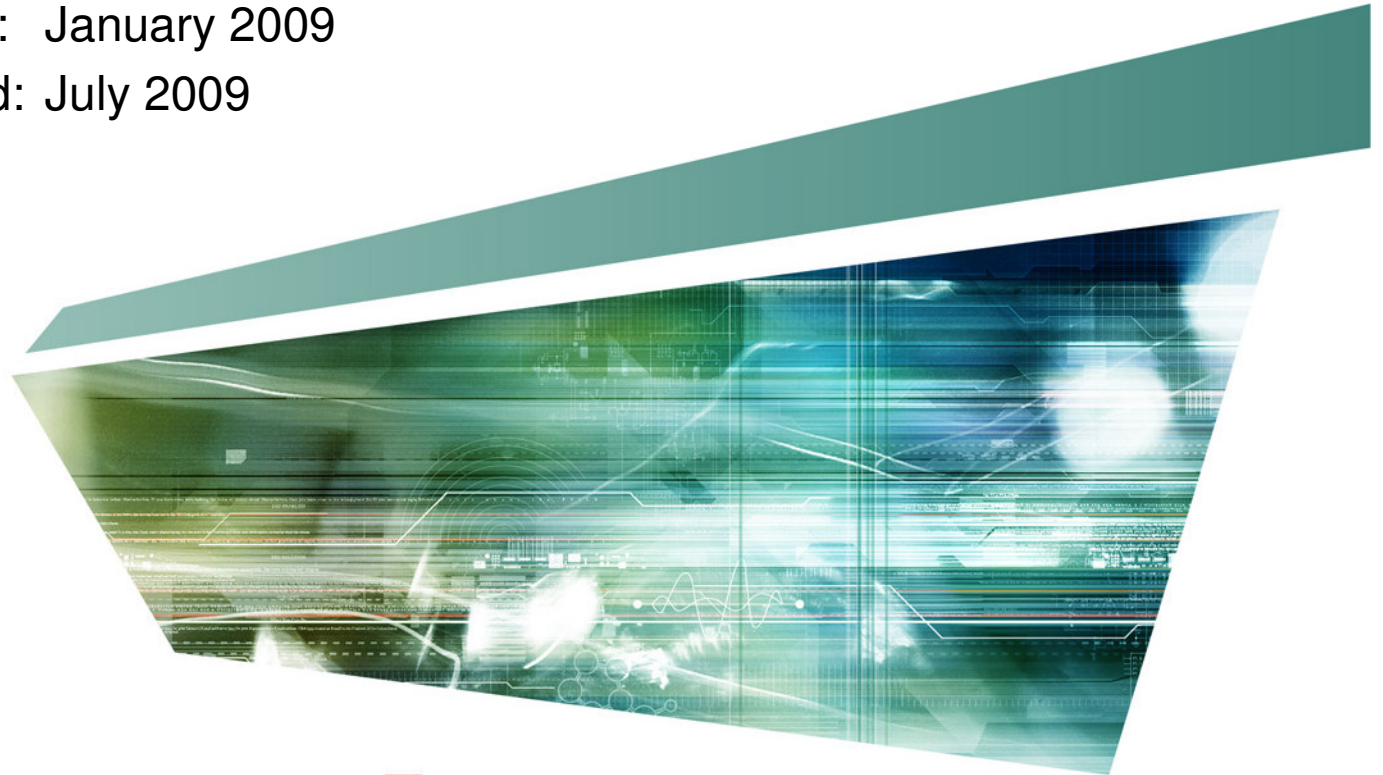


Cadence Platform Support Roadmap 2007-2010

Original: January 2009

Updated: July 2009





Platform Support Environment

- Cadence examines the hardware and operating system support environment on an annual basis and develops this general plan
 - Cadence strives to provide customers a 12-18 month forecast of major compute platforms support changes
- Not all products are supported on all platform/OS combinations
- The platform support matrices are subject to change.

Consolidated Compute Platform Roadmap

For New Base Releases: 2007 – 2010

Supported
 Dropped
 Not Supported

Hardware Architecture	X86		X86_64					
	32		64					
Operating system	Linux					Linux		
OS Vendor/OS Type	Red Hat RHEL		Red Hat RHEL			Novell SUSE SLES		
OS Version	3	4	3	4	5	9	10	11
2007	Supported	Supported	Supported	Supported	Not Supported	Supported	Supported	Not Supported
2008	Dropped	Supported	Dropped	Supported	Supported	Supported	Supported	Not Supported
2009	Dropped	Supported	Dropped	Supported	Supported	Dropped	Supported	Supported
2010	Dropped	Supported	Dropped	Supported	Supported	Dropped	Supported	Supported

- The Platform Roadmap applies to new **BASE** releases only
- Update and Hot-fix releases follow the Platform Matrix of their corresponding **BASE** release
- *Optional Platforms* are supported by a subset of Cadence products

Hardware Architecture	SPARC		X86_64	PowerPC	OPTIONAL PLATFORM						
	64		64	64	X86			X86_64			
Operating system	Solaris		Solaris	AIX	Windows			Windows			
OS Version	8	9	10	10	5.3	6.1	XP	Server 2003	Vista	Server 2003	Vista
2007	Supported	Supported	Supported	Supported	Supported	Not Supported	Supported	Supported	Supported	Not Supported	Not Supported
2008	Dropped	Dropped	Supported	Supported	Supported	Not Supported	Supported	Supported	Supported	Not Supported	Not Supported
2009	Dropped	Dropped	Supported	Supported	Supported	Not Supported	Supported	Supported	Supported	Not Supported	Not Supported
2010	Dropped	Dropped	Supported	Supported	Dropped	Supported	Supported	Supported	Supported	Not Supported	Not Supported

↑ Only change for 2010

Note:
 The "32/64 Bit" entries in these tables refer to the bit-ness of the hardware and OS kernel. The address space of Cadence applications (either 32-bit or 64-bit) is independent of this. Be aware however that a 64-bit kernel is required to run a 64-bit application while a 32-bit application will run on either a 32-bit or 64-bit kernel.

2008 Platform Support Plan

- Begin end of life for Solaris 8 and Solaris 9 OS
 - New base releases in 2008 will no longer ship on Solaris 8 or Solaris 9
 - Current active releases on Solaris 8/9 will continue to be supported through the lifecycle of that specific release
- Begin end of life for Linux RHEL 3.0 OS
 - New base releases in 2008 will no longer ship on RHEL 3.0
 - Current active releases on RHEL 3.0 will continue to be supported through the life cycle of that specific release
- Add support for Linux RHEL 5.0 OS on x86_64 architecture.

H/W Architecture	Operating System	OS Version
SPARC	Solaris	Solaris 10
X86	RedHat Linux	RHEL 4.0
	Windows	XP
		Server 2003
X86_64	RedHat Linux	Vista
		RHEL 4.0
	SUSE Linux	RHEL 5.0
		SLES 9
Solaris	SLES 10	
PowerPC	AIX	Solaris 10
		AIX 5.3

NOTE: x86_64 denotes 64 bit processors whose instruction sets are compatible with the x86 standard such as Intel Xeon-EM64T, AMD Opteron, etc.

2009 Platform Support Plan

- Begin end of life for SUSE SLES 9 OS
 - New base releases in 2009 will no longer ship on SLES 9
 - Current active releases on SLES 9 will continue to be supported through the life cycle of that specific release
- Add support for SUSE SLES 11*, Windows Server 2003, and Windows Vista OS on x86_64 architecture.

H/W Architecture	Operating System	OS Version
SPARC	Solaris	Solaris 10
X86	RedHat Linux	RHEL 4.0
	Windows	XP
		Server 2003
		Vista
X86_64	RedHat Linux	RHEL 4.0
		RHEL 5.0
	SUSE Linux	SLES 10
		SLES 11*
	Solaris	Solaris 10
	Windows	Server 2003
		Vista
PowerPC	AIX	AIX 5.3

* Support begins in 4Q09

NOTE: x86_64 denotes 64 bit processors whose instruction sets are compatible with the x86 standard such as Intel Xeon-EM64T, AMD Opteron, etc.

2010 Platform Support Plan

- Begin end of life for AIX 5.3 OS on PowerPC
 - New base releases in 2010 will no longer ship on AIX 5.3
 - Current active releases on AIX 5.3 will continue to be supported through the life cycle of that specific release
- Add support for AIX 6.0 on PowerPC for new base releases in 2010.

H/W Architecture	Operating System	OS Version
SPARC	Solaris	Solaris 10
X86	RedHat Linux	RHEL 4.0
	Windows	XP
		Server 2003
X86_64	RedHat Linux	RHEL 4.0
		RHEL 5.0
	SUSE Linux	SLES 10
		SLES 11
	Solaris	Solaris 10
	Windows	Server 2003
		Vista
PowerPC	AIX	AIX 6.1

NOTE: x86_64 denotes 64 bit processors whose instruction sets are compatible with the x86 standard such as Intel Xeon-EM64T, AMD Opteron, etc.



For more information...

- Platform End-of-Life letters are posted at:
 - Cadence.com
<http://www.cadence.com/support/computing/Pages/default.aspx>
 - Cadence SourceLink web site
http://sourcelink.cadence.com/docs/files/lifecycle/platform_EOL_letters.html



cā dence™

